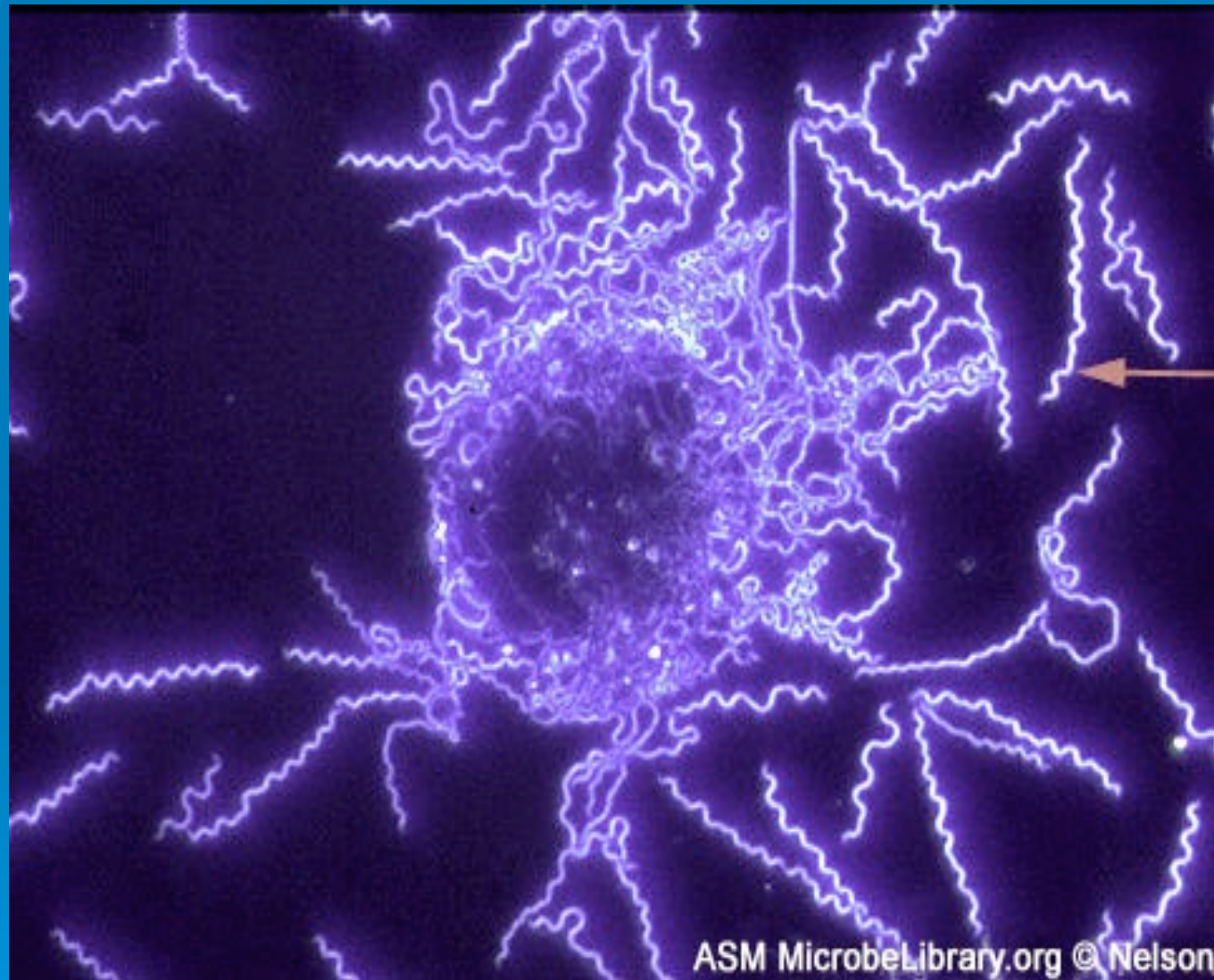


The treatment of Lyme disease in the ASD child

Dietrich Klinghardt MD, PhD
April 2010





Spirochete bacteria,
Borrelia burgdorferi

ASM MicrobeLibrary.org © Nelson

LYME BORRELIOSIS: GREAT IMITATOR



Saturday, 11 September 2010

LYME BORRELIOSIS: GREAT IMITATOR

**Lyme can cause cardiomyopathy,
CHF, perimyocarditis,
cardiac arrhythmias,
AV block and other
conduction disturbances.**

(Eur Heart J.1991 Aug;12 Supl D:73-5)

LYME BORRELIOSIS: GREAT IMITATOR

**Lyme can cause cardiomyopathy,
CHF, perimyocarditis,
cardiac arrhythmias,
AV block and other
conduction disturbances.**

(Eur Heart J.1991 Aug;12 Suppl D:73-5)

**Fetal borrelia can cause
fetal death, growth
retardation, cardiac
anomalies, hydrocephalus,
blindness, neonatal resp.
distress, SIDS
and toxemic pregnancy.**

(Rheum Dis Clin North Am.1989 Nov;15(4):657-77)

LYME BORRELIOSIS:



Saturday, 11 September 2010

LYME BORRELIOSIS: GREAT IMITATOR



Saturday, 11 September 2010

LYME BORRELIOSIS: GREAT IMITATOR

Lyme is a spirochetal illness resembling syphilis.



LYME BORRELIOSIS: GREAT IMITATOR

Lyme is a spirochetal illness resembling syphilis.

Can mimic MS, myelopathy,
polyneuropathy,
brain tumor,
encephalopathy.

(Neurosurgery.1992May;30(5):769-73)

LYME BORRELIOSIS: GREAT IMITATOR

Lyme is a spirochetal illness resembling syphilis.

**Can mimic MS, myelopathy,
polyneuropathy,
brain tumor,
encephalopathy.**

(Neurosurgery. 1992 May;30(5):769-73)

**Can cause meningitis,
encephalitis,
neuritis, mania,
depression, OCD,
schizophrenia, anorexia, dementia.**

(Am J Psychiatry. 1994 Nov;151(11):1571-83)

LYME BORRELIOSIS: TRANSMISSION



LYME BORRELIOSIS: TRANSMISSION

- Mosquitos , fleas, stinging flies (horse flies), spider bites



LYME BORRELIOSIS: TRANSMISSION

- Mosquitos , fleas, stinging flies (horse flies), spider bites
- ticks



LYME BORRELIOSIS: TRANSMISSION

- Mosquitos , fleas, stinging flies (horse flies), spider bites
- ticks
- Blood transfusions



LYME BORRELIOSIS: TRANSMISSION



- Mosquitos , fleas, stinging flies (horse flies), spider bites
- ticks
- Blood transfusions
- Sexual intercourse

LYME BORRELIOSIS: TRANSMISSION



- Mosquitos , fleas, stinging flies (horse flies), spider bites
- ticks
- Blood transfusions
- Sexual intercourse
- Trans-placental transfer to the fetus

LYME BORRELIOSIS: TRANSMISSION



- Mosquitos , fleas, stinging flies (horse flies), spider bites
- ticks
- Blood transfusions
- Sexual intercourse
- Trans-placental transfer to the fetus
- Breast feeding

LYME BORRELIOSIS: TRANSMISSION



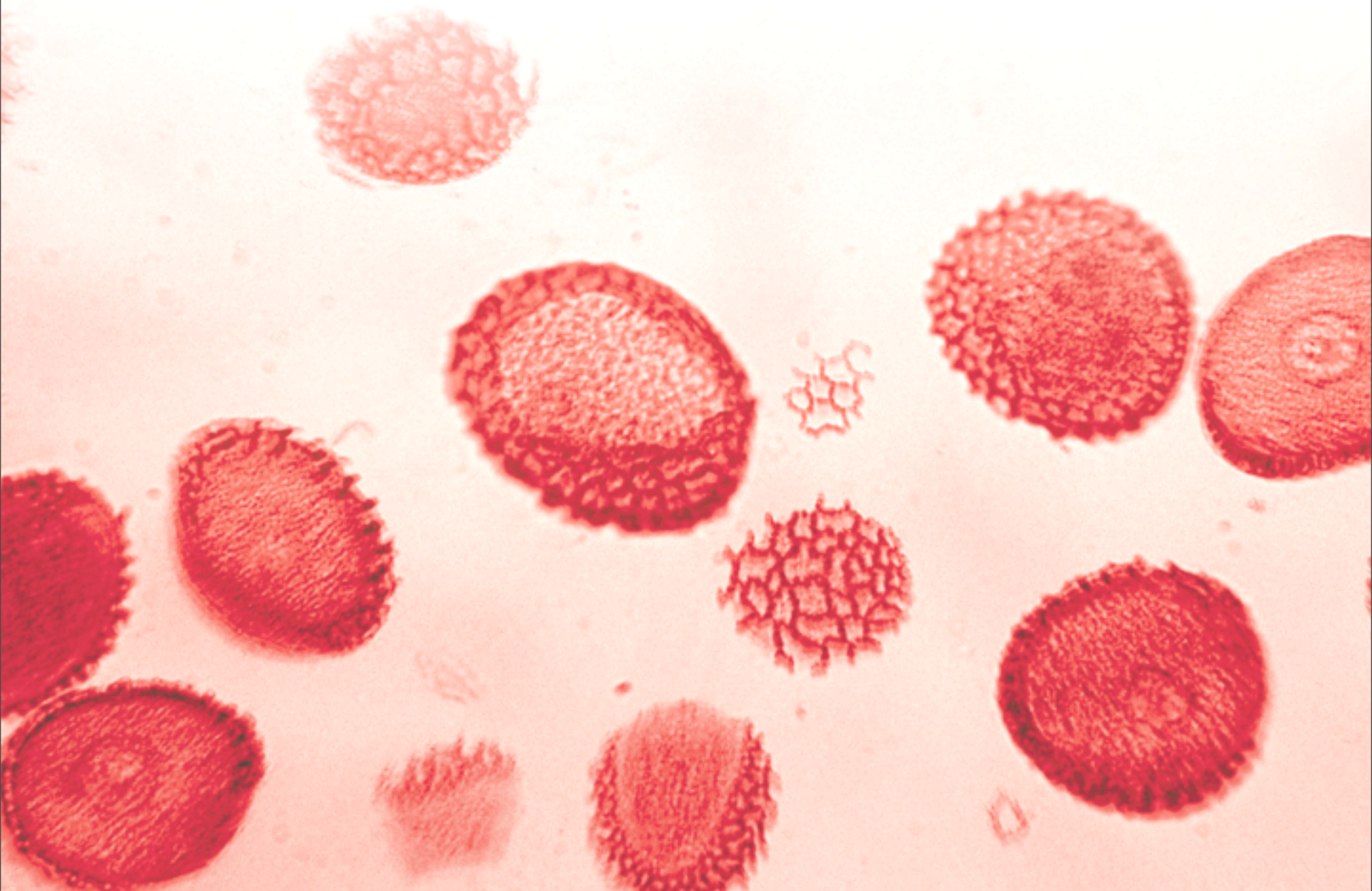
- Mosquitos , fleas, stinging flies (horse flies), spider bites
- ticks
- Blood transfusions
- Sexual intercourse
- Trans-placental transfer to the fetus
- Breast feeding
- Food

LYME BORRELIOSIS: TRANSMISSION

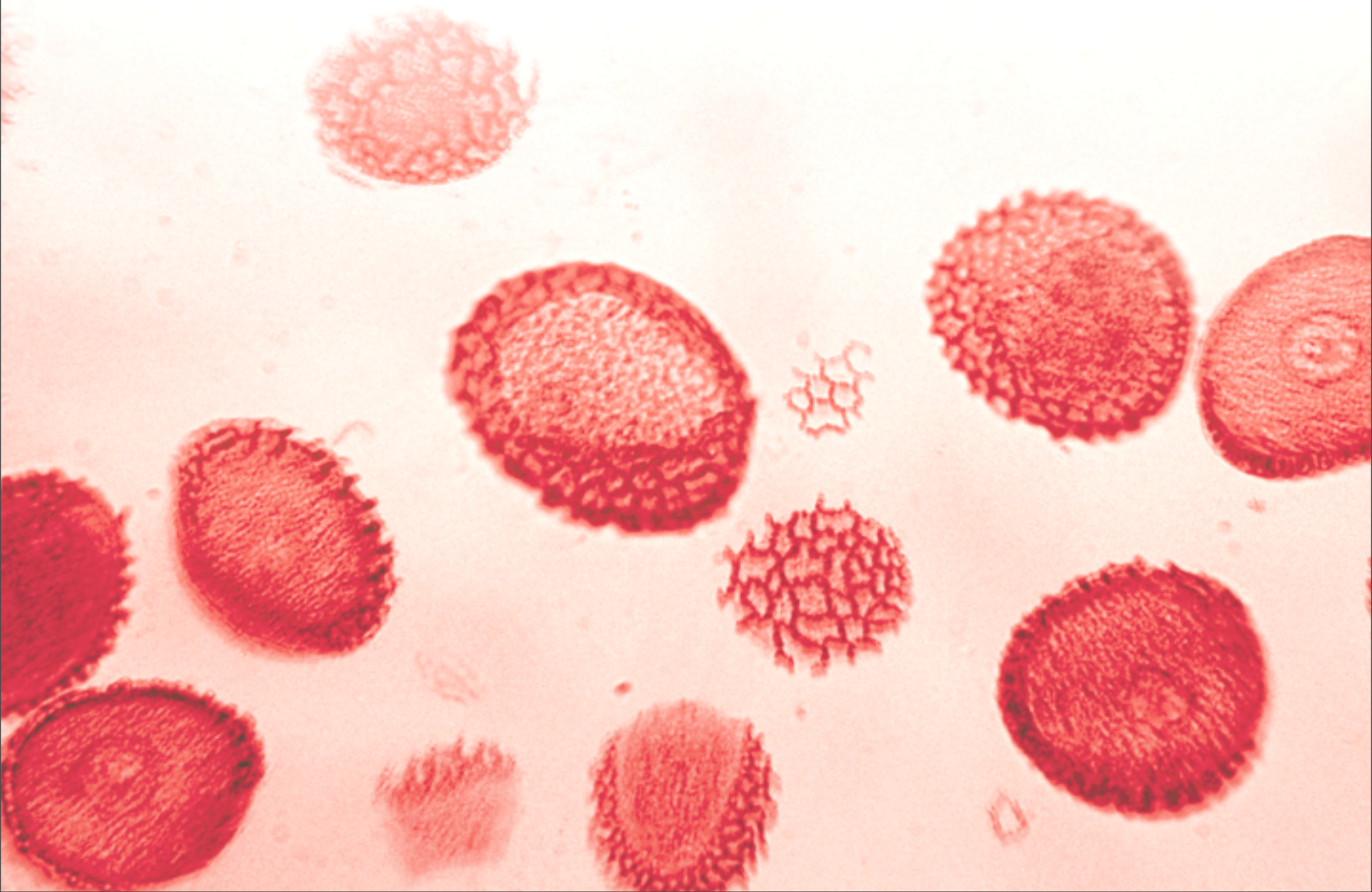


- Mosquitos , fleas, stinging flies (horse flies), spider bites
- ticks
- Blood transfusions
- Sexual intercourse
- Trans-placental transfer to the fetus
- Breast feeding
- Food
- Saliva (kissing), contaminated utensils and telephones

LYME Co-Infections

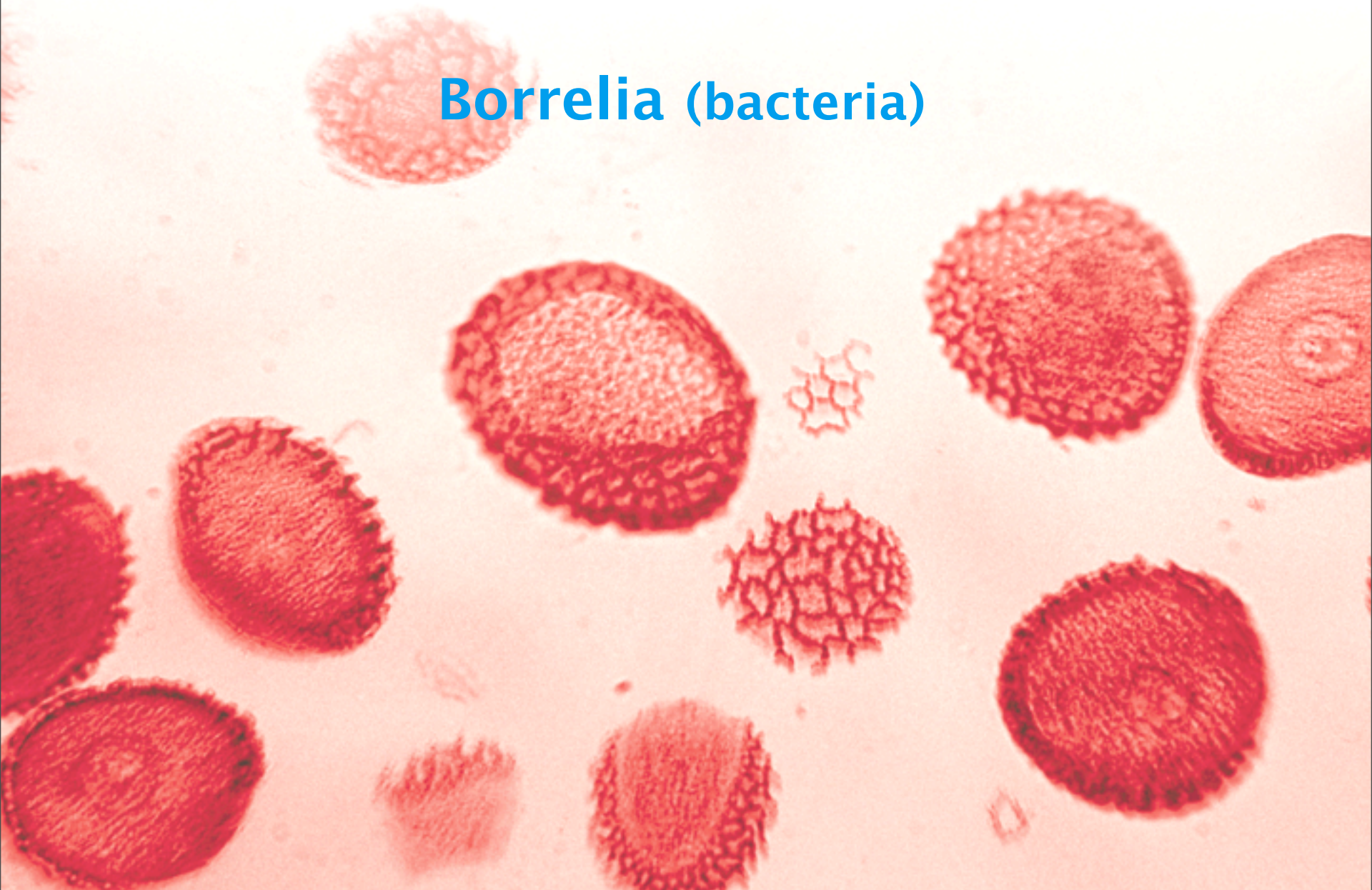


LYME Co-Infections



LYME Co-Infections

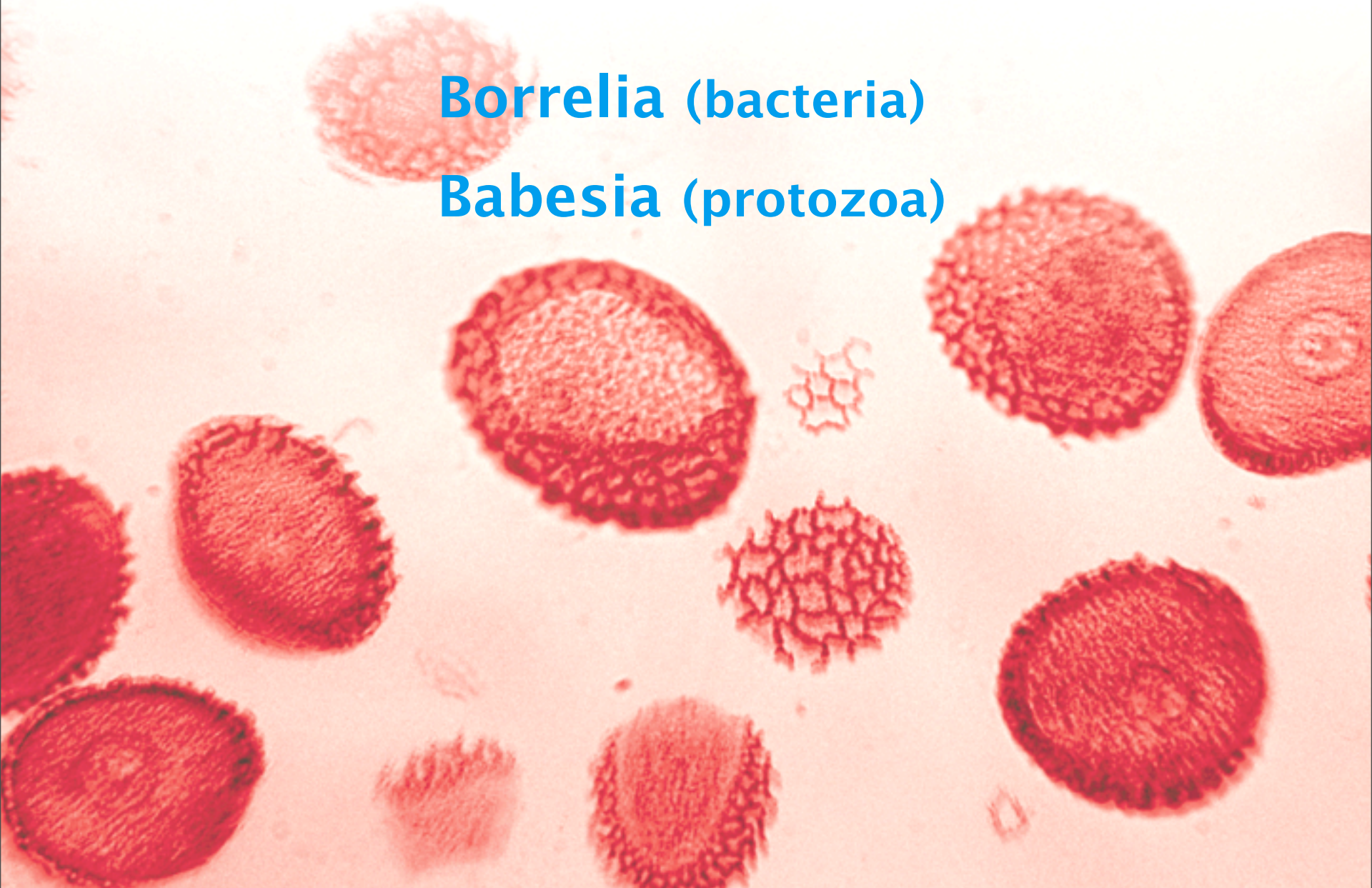
Borrelia (bacteria)



LYME Co-Infections

Borrelia (bacteria)

Babesia (protozoa)

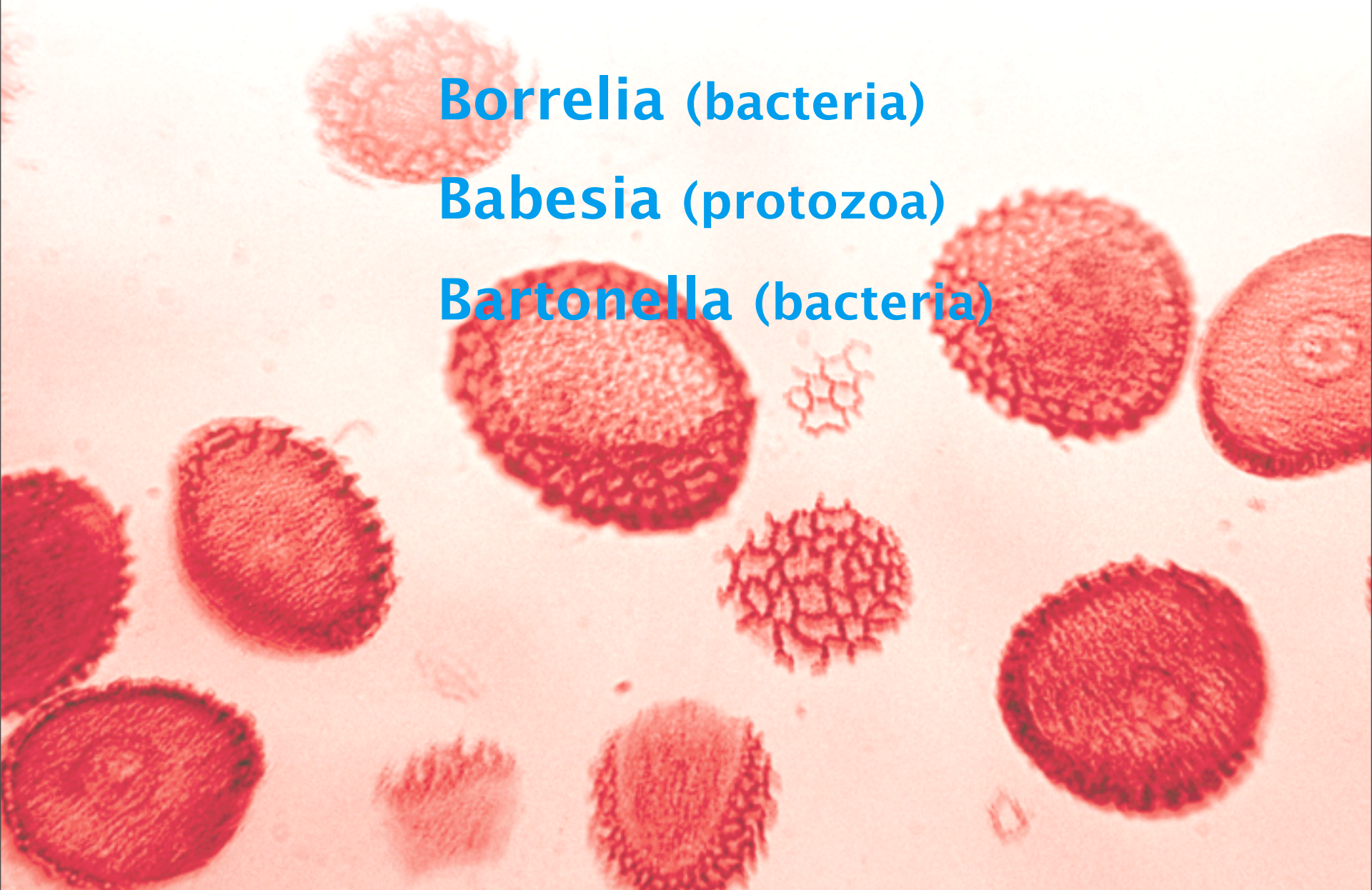


LYME Co-Infections

Borrelia (bacteria)

Babesia (protozoa)

Bartonella (bacteria)



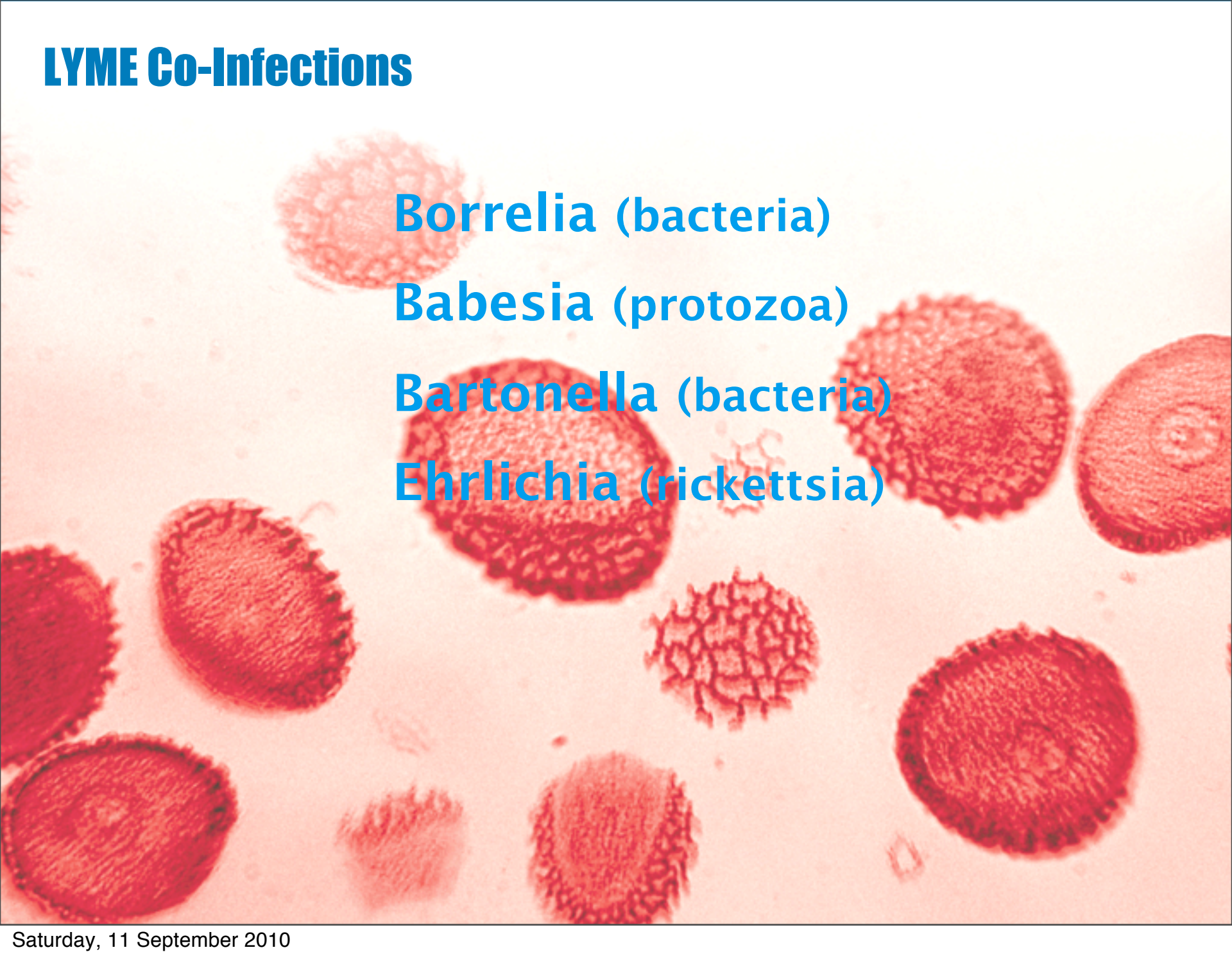
LYME Co-Infections

Borrelia (bacteria)

Babesia (protozoa)

Bartonella (bacteria)

Ehrlichia (rickettsia)



LYME Co-Infections

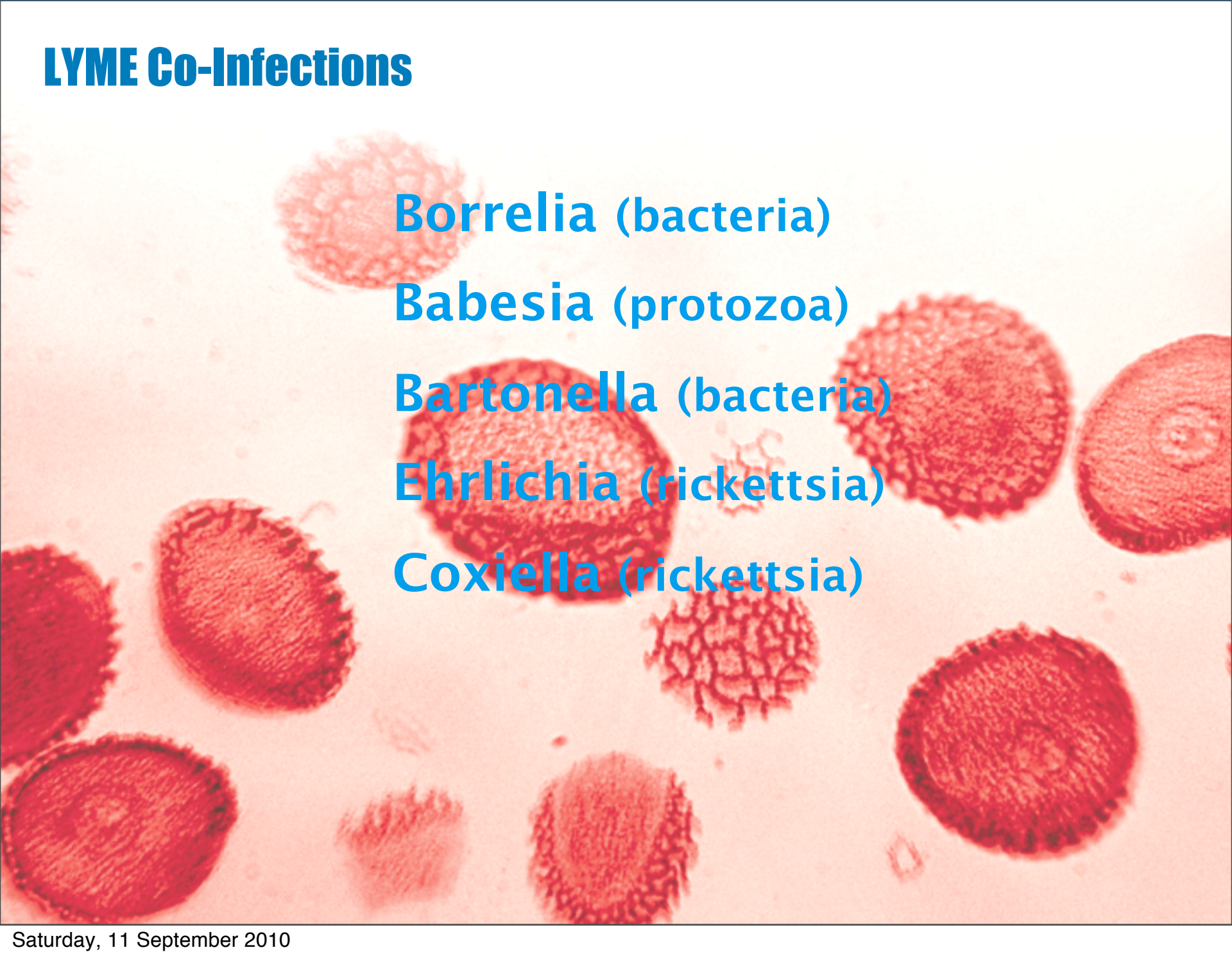
Borrelia (bacteria)

Babesia (protozoa)

Bartonella (bacteria)

Ehrlichia (rickettsia)

Coxiella (rickettsia)



LYME Co-Infections

Borrelia (bacteria)

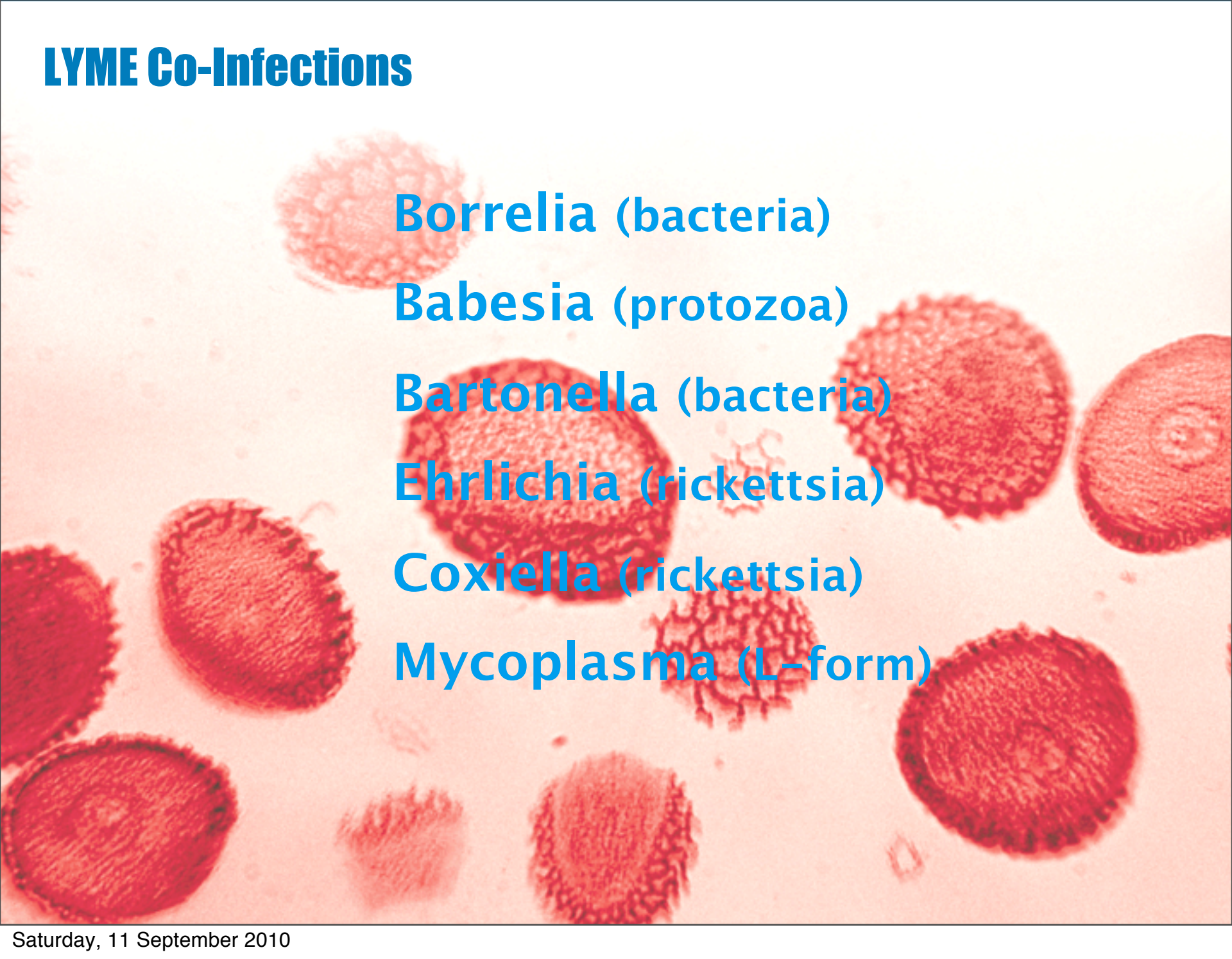
Babesia (protozoa)

Bartonella (bacteria)

Ehrlichia (rickettsia)

Coxiella (rickettsia)

Mycoplasma (L-form)



LYME Co-Infections

A microscopic image of several red blood cells, which are circular and have a reddish-orange hue. The cells are scattered across the frame, with some showing a distinct nucleus or internal structure. The background is a light, slightly textured pinkish-white.

Borrelia (bacteria)

Babesia (protozoa)

Bartonella (bacteria)

Ehrlichia (rickettsia)

Coxiella (rickettsia)

Mycoplasma (L-form)

**Viruses (HHV-6, CMV, EBV,
Borna, XMRV)**

Opportunistic Infections

- Giardia and amoebas
- Worms – most common: *Varestrongylus Klapowi* (lungworm)
- Mold/yeast
- All human pathogenic viruses (over 2000)
 - most common: Borna Virus, herpes family and XMRV
- Strep and oral bacteria (chronic tonsillitis)

Biological treatment of Lyme disease in ASD Children

The treatment of Lyme disease requires 4 distinctive steps:

1. Decreasing toxic body burden/unloading the system
2. Improving disturbed physiology
3. Decreasing microbial count
4. Immunemodulation

1. Unloading the system- detox

Microbes establish themselves by successfully modulating the host's immune system. They do this with a variety of mechanisms. One of them is the excretion of biotoxins and neural messenger molecules. Several of these block the host's innate mechanisms and enzyme systems capable to eliminate these substances (detox enzymes). These same blocked enzymes are the ones we use to detoxify mercury and other environmental toxins. The same enzymes may already be compromised by genetic polymorphisms.

The net effect: the host loses the ability to eliminate toxins and becomes increasingly contaminated with a spectrum of physiological, biochemical, emotional and social findings congruent with ASD.

Solution: use detox agents and methods in low EMF environment

1. Detox agent options: we use the same agents that remove metals to also remove biotoxins

- Chlorella, CVE and CGF
- Matrix Metals spray (nanonized chlorella and cilantro)
- Cilantro tincture
- Micro Silica (silica bound SH-groups)
- OSR (glutathion increase)
- Aminoacids: methionine, taurine, glycine, BCAAs
- Alginate
- Plant stem cell preparation (“7 flowerbuds” from BioPure)
- Chemicals: homeopathic 48 day detox pack
- Laser detox
- Oral DMPS, DMSA
- Subcutaneous injections with DMPS

1. **Decreasing toxic body** burden/unloading the system: the ASD child cannot eliminate toxins in the EMF environment

Lower EMF exposure :

Night time technology:

turn off all fuses, sleep sanctuary, turquoise

light/photon wave to increase melatonin and non-rem Delta sleep)

Day-time technology:

no wireless in home, no chordless phones. No bright lights at home. DVD/computer set on low contrast/volume

Stetzer filters, Renzo chip, consider silver coated clothing for EMF protection

Other sleep issues:

Non-toxic/allergenic bedding material (cave: flame retardants/PBDEs)

Avoid light/noise pollution at night

bitter orange (Andrea Lalama)

melatonin

Self Help: **1. Unloading the system - detox**

- Colon hydrotherapy/enemas and lymphatic drainage, rhythmic cranial and liver compression
- Breathing retraining (Linda Scotson Technique)
- Dry skin brushing and warm/cold showers
- Swedish sauna and Toxaway ionic foot bath
- Cilantro, chlorella, CGF, CVE, Matrix Metals

Detect and resolve **interference fields**:

- Scars
- Chronic Tonsillitis: regenerative cryotherapy (www.kryopraxis.de)
Zithromax 500 mg once a week
Quintessence (BioPure)
Sanum remedies: Notakehl and SanPseu for 6 weeks, then Sancombi for 9 months

Remove “**allergenic triggers**” and ongoing toxin exposure (from environment)

- Food allergies (Doris Rapp MD)
- Volatile organic compounds from carpets, furniture and paints
- new car smell (phthalates)
- Newspaper and office printing ink
- Work/profession related compounds from parents, Chinese toys
- Check the soil in garden (lead) and playground materials

1. Unloading the system - detox

Removing psychological toxins

Parents do the work:

- 20 minute writing exercise to overcome past trauma
- Family constellation work to resolve trans-generational issues
- Applied Psycho-Neurobiology to resolve conflicts and severe trauma
- Regular time spend in healthy nature
- Regular massage
- Qi Gong, Tai Chi or Meditation

Removing structural blockages

- Optimize the dental occlusion to restore cranial lymphatic pump
- Craniosacral therapy to improve fluid dynamics in CNS
- Visceral manipulation to improve organ function

2. Improving disturbed physiology and biochemistry

- Every child should receive inhalation with singlet oxygen energy (Valkion) to increase ATP, NADPH, glutathione. Increase ATP with D-galactose
- HPU urine test /address deficiencies (Core)
- Assessment via lab work or ART – correct what is missing and what is too much (minerals, fatty acids, aminoacids, hormones and electrolytes, glutathione, sulfur, etc.)
- Genetic testing: find minimal bypass nutrition to correct for SNPs or gene deletions/mutations
- Diet: gluten and casein free diet, Specific carbohydrate diet, Metabolic typing, blood group diet or ART based diet
- Common deficiencies in Lyme: magnesium: consider to give transdermal or via injection. Oral Mag feeds otherwise untreated spirochetes. Iron displacement in the brain (Zamboni)
- Copper, zinc and iron are spent by macrophages and appear in oxidized form in hair and serum, giving the wrong appearance of excess

2. Improving disturbed biochemistry and physiology: KPU/HPU

- Over 80% of our Lyme patients have developed HPU (hemo-pyrrol-lactam-uria). The term falsely used in most US literature is KPU (krypto-pyrrol-uria)
- HPU disarms the immune system by catastrophic depletion of zinc, manganese, arachidonic acid, histamin, taurine.
- These losses are hard to detect with any current technology (only bone and CNS biopsies are reliable).
- I use a 24 hr urine sample (kept in fridge). 1 capsule /day “core” (Biopure) treats a 5 year old (zinc, B6, chromium, biotin, molybdenum, taurine)
- Labs to consider:
 - HPU/KPU urine test (Vitamin Diagnostics)
 - alkaline phosphatase low normal
 - copper: zinc ration greater then 1 in hair and urine
 - low Omega 6 in red cell membrane fatty acid test
 - white blood cell zinc, red cell copper level

If KPU is treated first and the system is restored to normal levels (4-8 months), Borrelia, Bartonella-like organisms and Babesia respond to much milder interventions without significant Herxes or problems

2. Improving disturbed physiology and biochemistry

(vitality, detox, immune responses, tissue repair)

Neurophysiology

- Give the brain healthy rhythms: CES (V.Soobiah)
- Listening program, color therapy, meridian tapping therapies (MFT)
- Listen to Lyme entrainment CDs
- Spend time in nature
- Avoid disturbing EMF (chordless phones, cell phones, wireless technology, home near airport (radar), computer

Exercise

- Stretching
- Movement (dancing, walking, running)
- Floor time

Sequencing Treatment: the Lyme ABC

- There is an inherent order in which the microbes should be treated. If the order is correct, gentle methods work. Treatment should always combine electromagnetic interventions, using specific microbial inhibition frequencies (KMT CD- based sound technology) with the appropriate herb, antibiotic or other antimicrobial strategy. It should also always be combined with a toxin elimination program, good psychotherapy and general life style hygiene (all the stuff, that alternative Medicine stands for).
- Principle: start with the large opportunistic invaders. Go from large to small. Treat *Borrelia* last

A. **Worms:** (Ascaris, Taenia, Threadworms)

- Lab: hopeless in the US, PCR based parasite tests are less often false negative, saliva test for worms is sometimes helpful
- Physical exam: helminth pattern
- Treat by therapeutic trial
- Rizol Gamma
- Salt (12 grams/day) and Vit C www.lymephotos.com
- Alternatives: Arise and Shine program, Sputnik, Alinia, Biltricide and Albenza
- I often use Biltricide for 3 days (2 tbl. Tid), then Nitazoxanide 1000 mg bid for 20 days, then alternate Alinia and Biltricide only 2-3 days per week for 3 months. Only Albendazole and Nitazoxanide cross the blood brain barrier
- Larval stages (or mature worms) in lung: Inhalation with alcohol (L.Klapow protocol) or iodine: 4 drops SSKI in Omron hand-held battery powered inhaler once daily
- (source: www.MarksMarinePharmacy, www.magicpharma.com)

B. Protozoae: Babesia, Toxoplasmosis, Gardia, Amoebas and Trichomonas

- **Rizol Gamma**
- **Neem (use energized version/Biopure)**
- **Organic freeze dried garlic**
- **Artemisinin**
- **MMS**
- **Tinidazole**
- **Nitazoxanide (Alinia)**
- **Albendazole**
- **Mepron**
- **Riamet (Novartis)**

C. Strep infections (often behind some mental symptoms)

- Enderlein remedies (Notakehl, Sanukehl Pseu, Sankombi, Arthrokehl A)
- Conventional tonsilectomy
- Regular manual drainage
- Neural therapy injections with procaine and ozone (tonsil program)
- gargle/mouth wash with MMS, Rizol Gamma, Oxo
- Regenerative Cryotherapy (www.kryopraxis.de)
- *Zithromax 500 mg once weekly (dosage for 5 year old)*

E. The herpes family, XMRV and Borna

- Rizol Zeta
- Quintessence (5 herbs/Biopure)
- Freeze dried garlic
- Andrographis
- St John's Wort, olive leaf, monolaurin
- KMT-micro-current deactivation
- Alternatives: thymus extracts (ProBoost)
- mushroom extracts
- Ayurvedic herbs (Indian Gooseberry, Chebulic and Beleric myrobalan)
- Chapparal extracts
- Valtrex and Valcyte
- Artemisinin (XMRV)

F. Yeast/Mold:

- freeze dried organic garlic
- KMT micro-current desensitization
- Rizol Alpha and Gamma
- Nystatin, Amphotericin B, Fluconazole, Itra- and Voriconazole (antifungals have strong anti-spirochete effects)
- Eliminate food allergies/no grain diet
- Clean up the home (propolis vaporizer, matrix microbe spray)

G. Mycoplasma:

- Quintessence
- Rizol Gamma, Epsilon and My
- Freeze dried garlic
- MMS
- APN desensitization
- Enzymes
- Alternative: antibiotics

H. Borrelia, Rickettsia, Bartonella, Brucella, Ehrlichiosis

- Rizols (Borrelia: Epsilon, Lambda and Gamma, Bartonella: My (effective in ALS)
- Quintessence Herbs: Andrographis, Stephania Root, Japanese Knot Weed, Smilax, Red Root
- Teasel root (body pain)
- Homeopathic Lyme co-infection nosode (BioPure)
- New herbal compounds from W.Anderson
- Bee-venom, niacin and magnesium
- Liposomal artemisinin
- MFT (mental field therapy) and APN
- Alternatives: J.Burrascano M.D. antibiotic protocols, ozone therapy, UV-B

Klinghardt Lyme Cocktail

This remedy is based on 150 lbs body weight . The dosage has to be adjusted according to the weight of the child. The KLC has helped many autistic children to improve significantly

200-400 mg Artemisinin, 100 mg OSR (glutathion), 10 ml Phospholipid Exchange in blender at high speed to make liposomal artemisinin (detox, anti-viral, anti-Babesia, anti-Lyme, shuttle agent, biofilm breaker)

Then add

- D-galactose : 5 grams (increases ATP dramatically)
- 10 -20 drops 20 % Propolis Tincture (anti-viral)
- Quintessence (Lyme, Ehrlichia, Bartonella)
- 15 ml Rechtsregulat (enzyme mix to break biofilm)
- MicroSilica 100 mg
- Co-curcumin (Ayush Herbs): 1 tsp plus pippli 2 caps (pepper to increase absorption)
- Vit C powder 2000 mg
- Acai powder (anti-microbial, anti-oxidant) 1 tsp
- Mucuna powder 1 tsp (increases L-Dopa for language and motor development)
- ½ glass grapefruit juice (important for artemisinin absorption)
- ½ glass water
- Optional:
 - GSE 10 drops - grapefruitseed extract (anti-microbial, anti-biofilm)
 - freeze dried garlic 4 capsules
 - Energized Neem: 2 caps three times/day
- *Drink this amount twice daily, 5 days on, 2 days off. 3 weeks on, 1 week off.*
- *Most products from BioPure 425 462 8414 - BioPureUS.com and BiopureEurope.com*

3. Decreasing the pathogen count

Treatment of Lyme with ozonated plant oils (rizols). Rizols have strong and specific anti-microbial properties, no known adverse long term effects, are relatively inexpensive and are pleasant to take. They have been used successfully since 1905

1: treat **parasites, mold and anaerobes**

Rizol Gamma (effective dose: 15-20 drops tid)

2: treat both RNA (Borna, etc.) and DNA (HHV-6, EBV, etc.) **viruses**: Rizol Zeta (20 drops tid)

3: when on full dose of Gamma and Zeta, treat **Babesia**:

acidified sodium chlorite ("MMS"): 15 drops 1 hour apart, 2 days in a row, once weekly for 4 – 8 weeks. Or: Oxo – 2 caps t.i.d.

4: after 2 months on full treatment: stop or reduce Rizol Gamma and treat **Bartonella**: Rizol My (20 drops tid)

5: after 2 months reduce dose of rizols Zeta and My to 10 drops tid and treat **spirochetes**: add Rizol Epsilon and Jota, 10 drops tid each

Always follow rizol with adsorbent (**biosorption**): chlorella (20 tbi), chitosan (1-2 caps), zeolite (1 tsp) or charcoal (2 caps)

3. Decreasing the pathogen count : the rizols

Rizol-Gamma

70% Rizol-raw material (ozonated castor oil treated with high voltage electrolysis)

10 % clove oil

10 % oil of artemesia

10 % black walnut oil

Rizol-Zeta

69,3 % Rizol-raw material

10,0 % oil of artemesia annua

10,0 % clove oil

5,0 % black cumin oil


3,0 % moxa oil

1,8 % walnut oil

0,9 % oil of majoram

3. Decreasing the pathogen count

Yearbooks of the Karl und Veronica Carstens-foundation



Jahrbuch

**Karl und Veronica Carstens-Stiftung
im Stifterverband für die Deutsche Wissenschaft**

Förderschwerpunkte

Die Ambulanz für Naturheilkunde	3
Das Biometrische Zentrum für Erfahrungsmedizin	45
Die Reihe 'edition forschung'	58

Projektförderungen

Kontrollierte klinische Studien zur Homöopathie	65
TCM bei klimakterischen Beschwerden	84
Volksheilkundliche Laienverbände im Dritten Reich	104
Modellprojekt „Homöopathie in der Pädiatrie“	116
Kinesiologie bei Nahrungsmittelunverträglichkeiten im Kindesalter	153
Untersuchungen zur Wirkung langkettiger Ozonide	164
Neue Aspekte der Kirlian-Fotografie	172

Promotionsstipendien 209

Dokumentation

Zum Stand der klinischen Forschung zur Homöopathie	219
Homöopathie und Homöopathieforschung in Europa	229
Eine Metaanalyse der homöopathischen Behandlung der Pollinosis mit Galphimia glauca	235

Hippokrates Verlag Stuttgart

3

3. Decreasing the pathogen count

Carstens Report/Research by Gerhard Steidl PhD: Active oxygen against pathogenic anaerobes -properties and research results

In nature

Humans and animals:

Immunsystem

Respiratory chain

Cytochrome P450

(detox enzymes)

Plants:

Endoperoxide

<<<>>>>

Synthetic

Peroxides

H₂O₂

Ozone

Magnesiumperoxide

Organic Peroxides

Ozonide (rizole)

Endoperoxides and Ozonides
are identical in structure and properties

3. Decreasing the pathogen count : microbial inhibition by rizols

➤ 1. Inhibition (culture medium)

Pathogen:	Candida	Aspergillus	Aerobe B.	Anaerobe B.
Rizol-raw	++++	++	++	++++
Ozone water	-----	-----	-----	-----

2. Agar dilution test

Pathogen	Candida	Aspergillus	Aerobes	Anaerobes
Rizol-concentr.				
1,25 %	+	-----	+	+
2,50 %	++	-----	+	++
5,00 %	++++	+	++	+++
10,0 %	++++	++	++	++++

symbols: ----- no inhibition
 + minimal inhibition

 ++ moderate inhibition

 +++ good inhibition

 ++++ very good

inhibition

3. Decreasing the pathogen count

Hydrogenperoxide H_2O_2

Ozon O_3

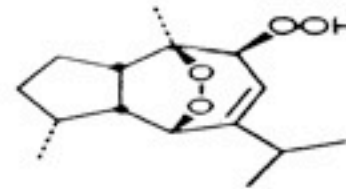
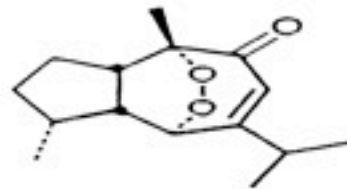
$H-O-O-H$

$O-O-O$

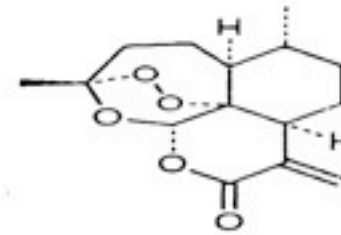
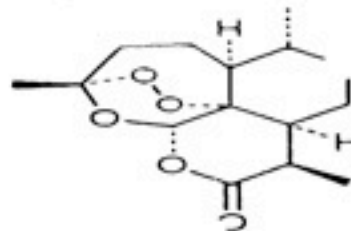
Endoperoxides in plants:



Eudesmanolid-Struktur aus
Artemisia herba-alba



Guaian-Endoperoxide aus
Alpinia japonica und
Alpinia intermedia (Galgant)
Ähnliche Strukturen in *Achillea ligustica* (Schafgarbe)
und *Anthemis nobilis* (Römische Kamille)



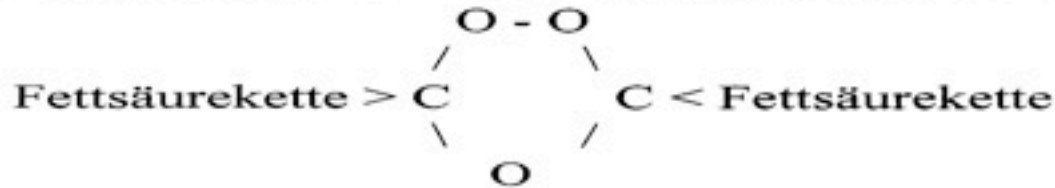
Artemisinin aus
Artemisia annua (Wermut-Art)

3. Decreasing the pathogen count:

Trioxolan (rizol ingredient): comparisons with endoperoxides

Die Struktur des Ozonids und dessen Ähnlichkeit mit pflanzlichen Endoperoxiden

Ringstruktur-Prinzip des Wirkstoffs Ozonid in den Rizol-Rezepturen.
Dieser Wirkstoff ist bakterizid und fungizid gegen pathogene Anaerobier

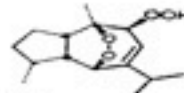
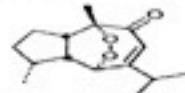


Von einer **Imitation natürlicher Endoperoxide** kann man sprechen, weil es in der Natur eine Vielzahl von über 300 ähnlichen Persauerstoff-Verbindungen gibt, die bereits isoliert und identifiziert wurden. Am besten untersucht ist das **Artemisinin** aus der Wermut-Art *Artemisia annua* L., eine Pflanze der traditionellen chinesischen Medizin, in seiner Wirkung gegen den Malaria-Erreger.

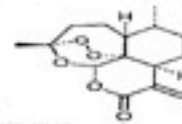
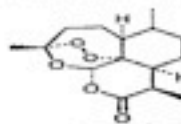
Beispiele für pflanzliche Endoperoxide mit ähnlicher Ringstruktur wie das Ozonid:



Endomonomerol-Struktur aus *Artemisia herba-alba*



Guaiar-Endoperoxide aus *Alpinia japonica* und *Alpinia sumatrana* (Galanga)
Ähnliche Strukturen in *Achillea ligustica* (Schafgarbe) und *Achillea nobilis* (Römische Kamille)



Artemisinin aus *Artemisia annua* (Wermut-Art)

Man beachte die Sauerstoffbrücken im Ozonid (oben) und in den pflanzlichen Endoperoxiden (unten).

3. Decreasing the pathogen count

Institut für Zoologie I der Universität Erlangen-Nürnberg Prof. Dr. Wilfried Haas

Hemmende Wirkung von Ozoniden auf den Bilharziose-Erreger im Laborversuch

Zur Prüfung der Empfindlichkeit von Parasiten gegenüber Ozoniden (Rizol) wurde eine humanpathogene Parasitenart getestet. Es handelt sich um Cercarien (infektiöse Larven) von *Schistosoma mansoni*.

Versuchsdauer 1 h Inkubationszeit, je 10 Durchgänge. Dabei wurden 2 Rizol-Versionen untersucht, einmal Rizol, das nur die Ozonide enthält, zweitens Rizol mit einem Zusatz von Wermut-Öl, Nelkenöl und Walnußöl (Para-Rizol).

Ergebnisse:

Konzentration im Agar			
A) Rizol (mg/ml)	Anteil Cercarien penet.%	Anteil Cercarien tot %	Anzahl Cercarien
10,0	3,2	100	31
1,0	18,9	6,6	90
0,1	0	1,7	117
Kontrollsubstanz Linolensäure 0,01 mM	26,5	8,4	109
Kontrolle	0	0	83

Konzentration im Agar			
B) Para-Rizol (mg/ml)	Anteil Cercarien penet.%	Anteil Cercarien tot %	Anzahl Cercarien
2,00	13,2	99	212
0,20	0	0	99
0,02	0	1	78
Kontrollsubstanz Linolensäure 0,01 mM	26,5	8,4	162
Kontrolle	1	0	113

Die Cercarien werden mit dem Ozonid bereits ab einer Konzentration von 10 mg/ml = 1 % vollständig abgetötet. Ein Zusatz von ätherischen Ölen von Wermut und Nelke verbessert die Wirkung, so daß 99% der Cercarien bereits bei 2 mg/ml = 0,2 % abgetötet werden. Bei Wermut dominiert das Thujon, bei Nelke das Eugenol. Beide sind in der pharmakologischen Literatur als wurmwidrig beschrieben. Bei der Anwendung am Menschen kann eine entsprechende Wirkung im Falle einer Parasitenbelastung erwartet werden.

3. Decreasing the pathogen count

Biological effects

- The ozonides transfer oxygen and change the environment in which anaerobic pathogenic germs live, making it aerobic
- This prevents anaerobic germs, such as Clostridia, from multiplying
- The oil is surface-active and, with its active substances, moistens the intestinal mucous membrane where nests of fungi and bacteria and parasites might be located
- The rizol constituents have been found intracellularly and in the matrix (indicating anti-microbial activity both intra-and extracellularly)

Cell toxicology studies:

- mitochondria are not damaged,
- OECD test for mutagenicity produced the result: not mutagenic.
- Normal human cells are guided into apoptosis (beneficial and genetically pre-programmed cell death)
- previously damaged and tumour cells are destroyed
- no adverse pharmacological effects were found in numerous cell culture tests

4. Immunemodulation

1. Use the CD 57 test (Labcorp – Stricker panel) to monitor immune status
2. Enderlein remedies: treat immune responses to mold: Nigersan, Notakehl, Mucukehl, Fortakehl, Pefrakehl General Immune modulation: Utilin, Utilin -S, Latensin, Recarcin
3. Auto-hemotherapy or auto-urine therapy (2 ml biw)
4. Buhner herbs (Quintessence from BioPure) 8-10 dropperfull in 1 liter water
5. Allergie-Immun saliva based drops (Germany)
6. Klinghardt H-7 homeopathics made from saliva, urine and stool
7. Adjunctive physics based immune modulation tools(BioTools):
 - KMT frequency-based biofield treatment (anti-microbial CDs)
 - Health Light super LED treatment of focal areas
 - Valkion: singlet oxygen energy delivery via inhaled air or drinking water
 - Photon Wave or Laser immune modulation

Medical drugs

Occasionally the use of medical antimicrobials is beneficial in addition to this program (ILADS recommendations)

Top of the list:

- anti-virals (Valtrex and Valcyte)
- anti-fungals (itra- and voriconazole)
- anti-parasitics (Alinia and Biltricide)
- antibiotics (with above program, minocycline, and anti-Malarials work again!)

contact

Dietrich Klinghardt MD, PhD

Office (Kirkland/Seattle): 425 823 8818

www.klinghardt.org